

\$699,000 - Spruce Ave, Gabriola Island

MLS® #891321

\$699,000

0 Bedroom, 0.00 Bathroom,
Residential on 10.00 Acres

N/A, Gabriola Island, BC

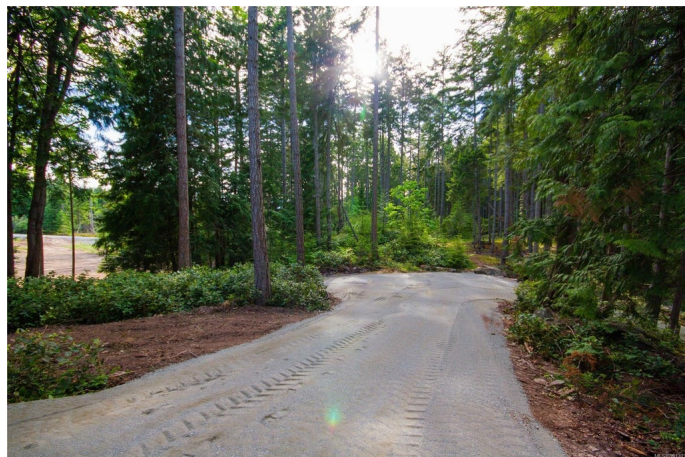
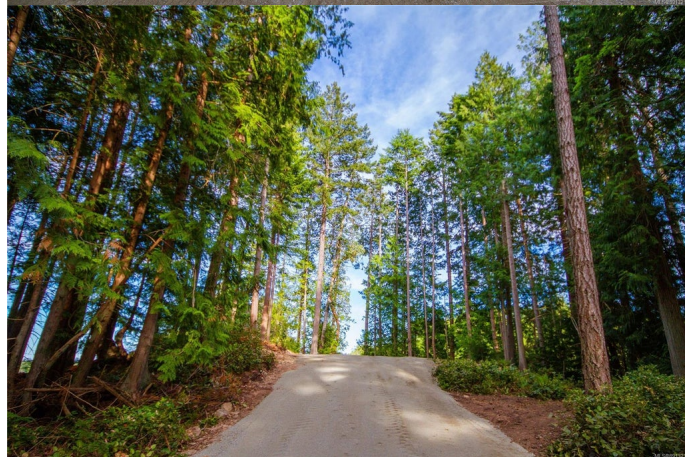
A truly unique and picturesque country acreage awaits! The driveway has been completed, a potential build site cleared, a well drilled and a septic system location sited! Get away from the crowded city, it's hustle and bustle and find your private sanctuary here on beautiful Gabriola Island! Situated at the end of Spruce avenue, a winding country road, you will find this gem of a 10 acre property. The property appreciates a variety of trees and slopes down with a switchback road to its lower levels. The views from the building sites are quite spectacular and so much potential can be found awaits! Gabriola Island has so much to offer when it comes to amenities and quality of life. Accessing Gabriola is just a short ferry ride from Nanaimo or a quick seaplane ride to YVR Airport's south terminal. GST Applicable. Verify all data and measurements if deemed important.

Basic Information

MLS® #	891321
Price	\$699,000
Sub-Type	Land
Baths	0.00

Location Information

Address	Spruce Ave
Postal Code	V0R 1X4
Area	Islands



Sub Area	Isl Gabriola Island
Jurisdiction	Nanaimo Rural (768)
PID Number	009-739-076
View	Mountain(s), Ocean

Features & Amenities

Water	Well: Drilled
Sewer	None

Additional Information

Pet Policy	Aquariums, Birds, Caged Mammals, Cats, Dogs
Rental Policy	Unrestricted
Lot Features	Central Location, Private, Quiet Area, Shopping Nearby, Acreage, Easy Access, Hillside, Rural Setting, Sloping

Listing Details

Listing Office	Royal LePage Nanaimo Realty Gabriola
----------------	--------------------------------------

MLS® property information is provided under copyright© by the Vancouver Island Real Estate Board and Victoria Real Estate Board. The information is from sources deemed reliable, but should not be relied upon without independent verification.